

Norwalk Tank Farm Update

***Presented to the Norwalk Tank Farm
Restoration Advisory Board***

April 26, 2007

Presentation Overview

Topics to be Covered

- Second Addendum to RAP Update
- Remediation Operations Update
- Sentry Event Update

Second Addendum to RAP Update Completed Activities

- The final document of the Second Addendum to RAP (Second Addendum) was submitted to the RWQCB in November 2006. The final document incorporated comments received from the RWQCB and RAB.
- The RWQCB granted approval on April 2, 2007 to implement the Second Addendum.
- Total fluids pumps have been ordered and received.
- Soil vapor extraction conveyance piping have been inspected and repaired.

Second Addendum to RAP Update Tentative Implementation Schedule

April – May 2007

- Receive RWQCB approval for implementation of Second Addendum
- Plan and coordinate field work (retain subcontractors, coordinate off-site access, permitting, update health and safety plan)

May – July 2007

- Field work (pilot testing, well installation, well development, pump installation, system modifications)
- System startup and evaluation

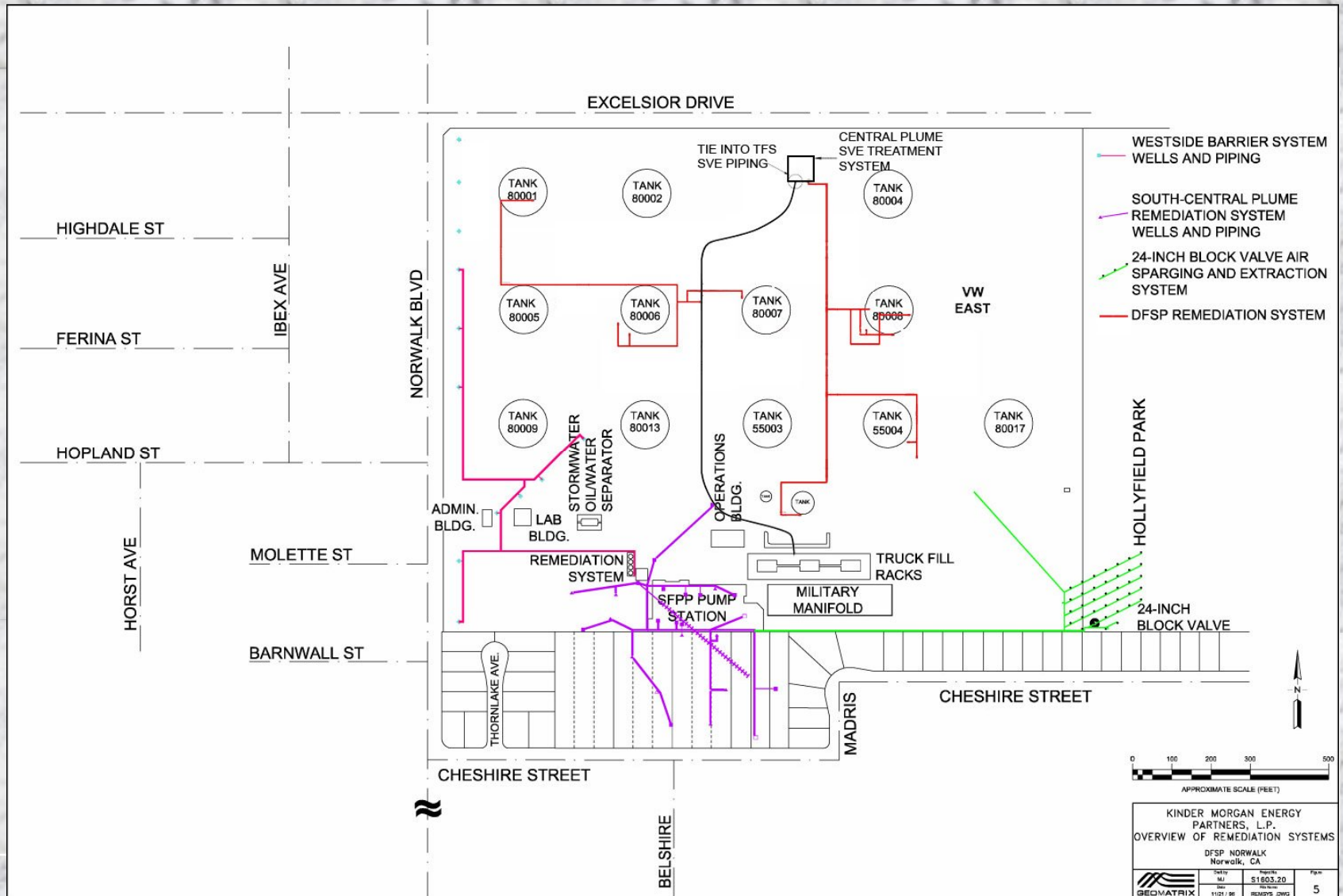
July 2007 – July 2008

- Update RAB on a quarterly basis

August 2008

- Submit first annual remediation system evaluation report

Map of Current Remediation Systems



Groundwater/Product Extraction System

- 8 groundwater extraction wells in the West Side Barrier area
- 6 total fluids (product and groundwater) extraction wells and 2 groundwater extraction wells in the South-Central Plume area
- 2 total fluids (product and groundwater) extraction wells and 1 groundwater extraction well in the Southeastern 24-Inch Block Valve area

Groundwater/Product Extraction System Operations Summary

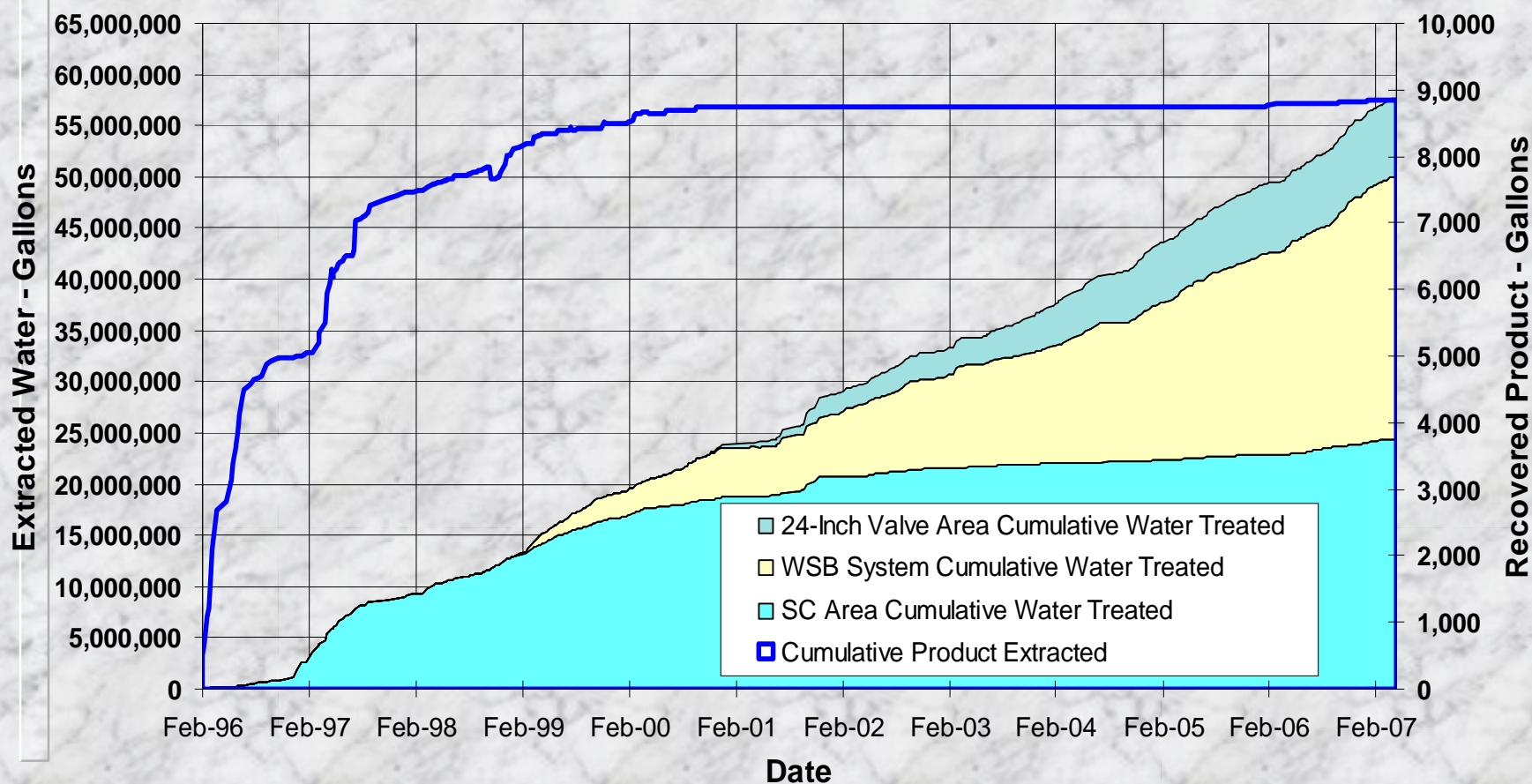
- Total groundwater extracted since January 2007 RAB meeting:
 - South-Central Plume area: 281,100 gallons
 - Southeastern 24-Inch Valve area: 133,000 gallons
 - West Side Barrier area: 753,200 gallons
 - Manual product recovery: 13 gallons
- Total groundwater extracted since September 1995:
 - South-Central Plume area: 24.4 million gallons
 - Southeastern 24-Inch Valve area: 7.6 million gallons
 - West Side Barrier area: 25.6 million gallons
 - Total groundwater extracted: 57.7 million gallons
 - 8,846 gallons free product removed

Groundwater/Product Extraction System Operations Summary

- The groundwater/product extraction system operated continuously during the first quarter 2007 with the following exceptions:
 - pump maintenance
 - air compressor service
- Percent operation: 88%

Groundwater/Product Extraction System Operations Summary

Produced Extracted and Water Treated Summary



Soil Vapor Extraction System

- 17 onsite and 5 off-site vapor extraction wells in the South-Central Plume area.
- 2 vapor extraction wells in the Southeastern 24-Inch Block Valve area.

Soil Vapor Extraction System Operations Summary

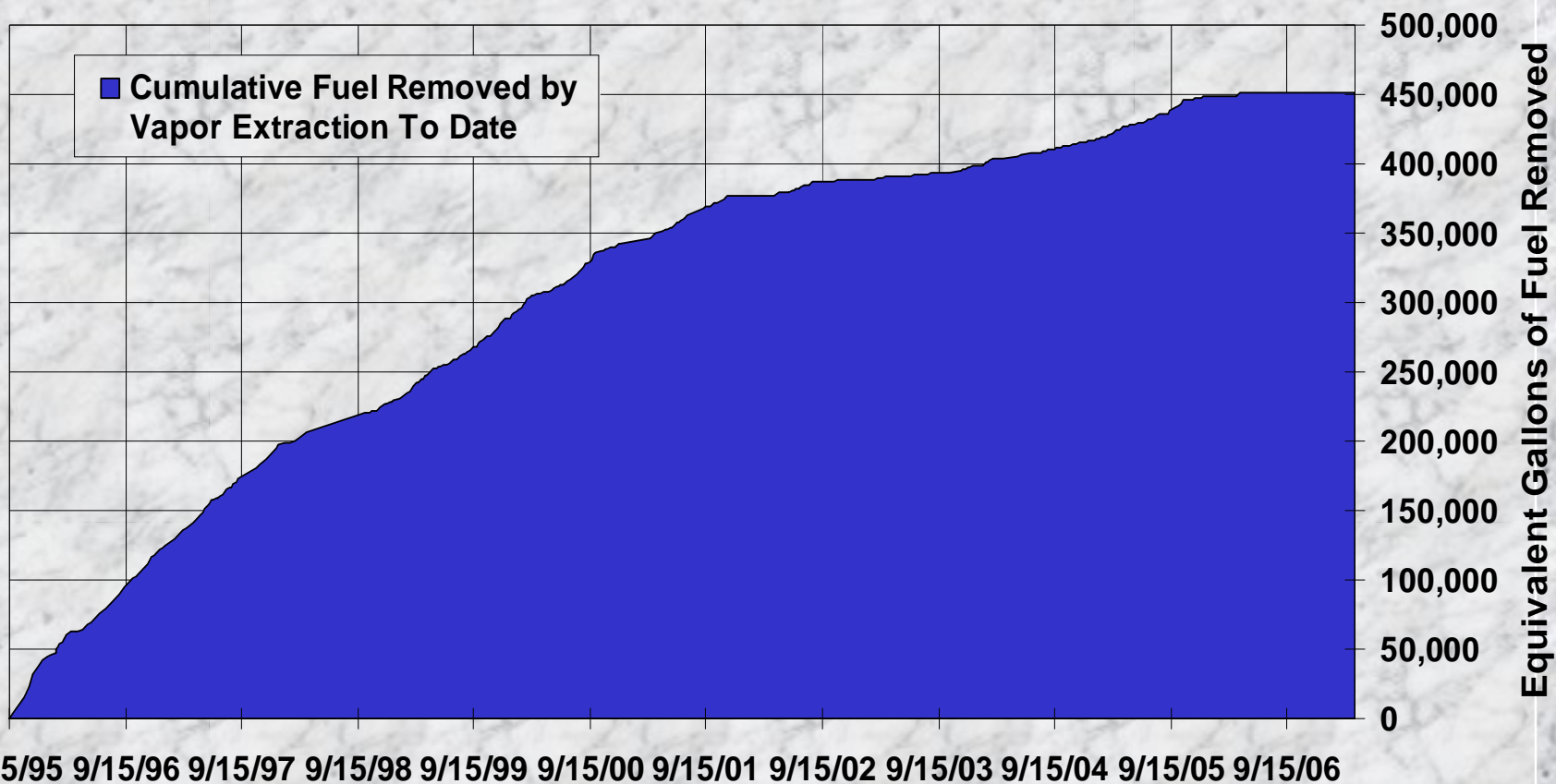
- Approximately 300 gallons equivalent of fuel removed from soil and destroyed by catalytic oxidation since the January 2007 RAB meeting.
- Approximately 451,500 gallons equivalent of fuel removed from soil and destroyed by catalytic and thermal oxidation since September 1995.
- Approximately 54,829 hours of operation since September 1995.

Soil Vapor Extraction System Operations Summary

- The SVE system operated continuously during the first quarter 2007 with the following exception:
 - Replacement & upgrade of belts and pulleys on the SVE blower/motor assembly
- Percent operation: 70%

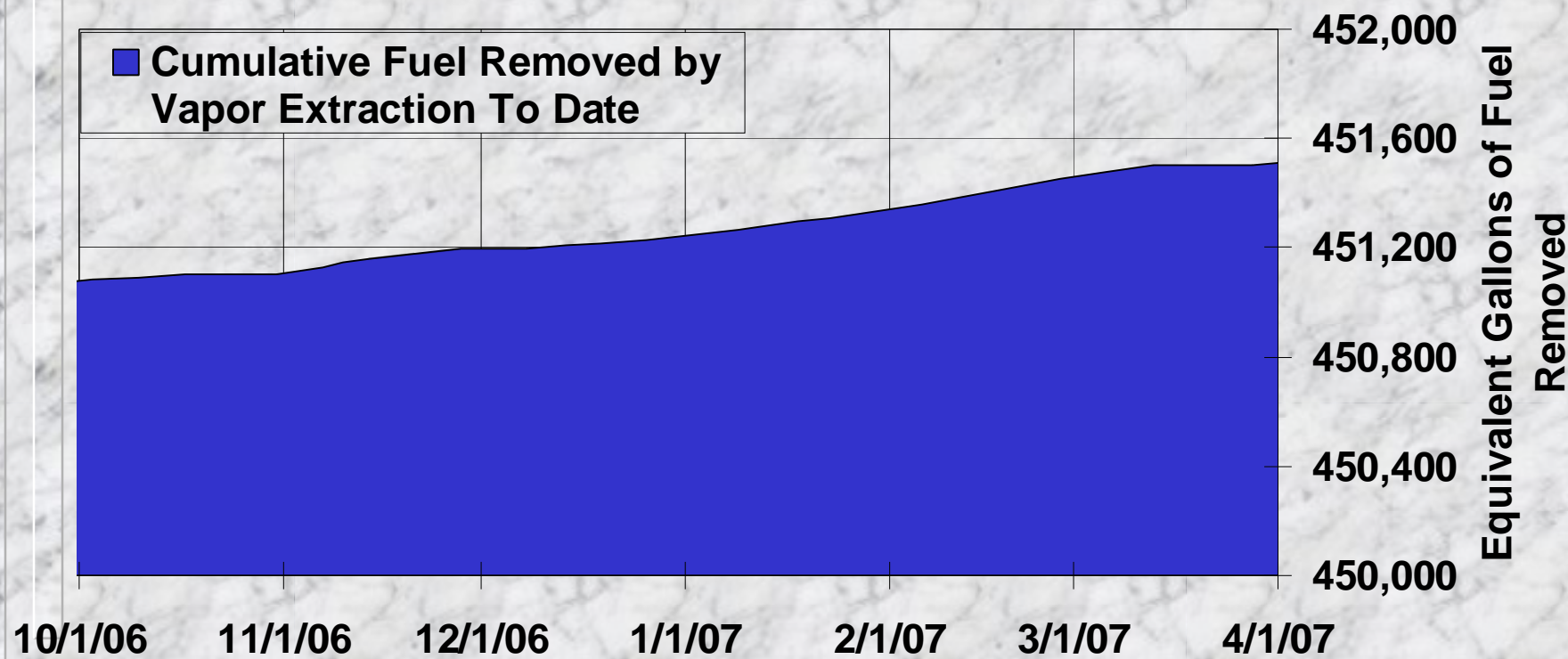
Soil Vapor Extraction System Operations Summary

Cumulative Fuel Removed by Vapor Extraction To Date

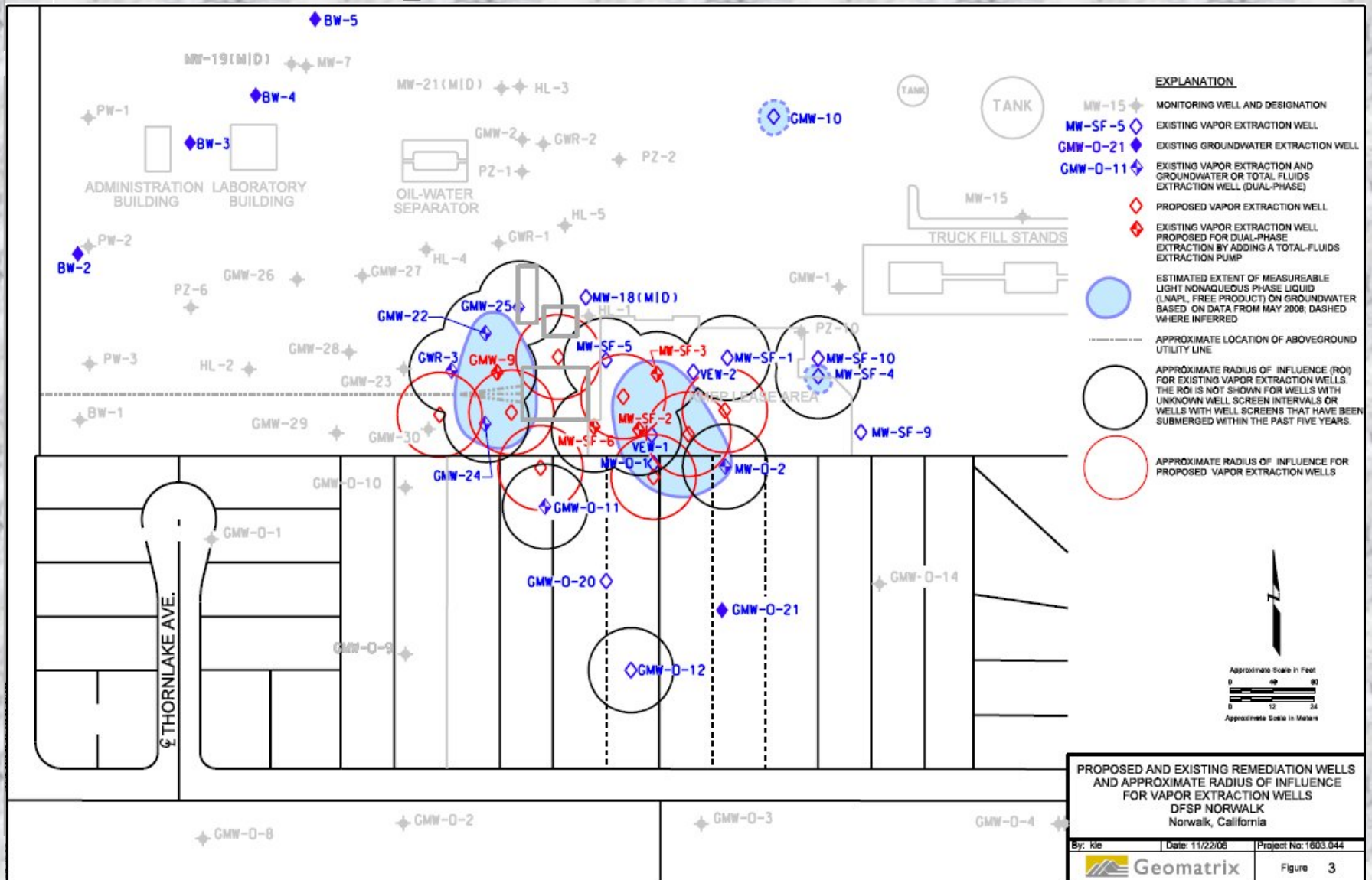


Soil Vapor Extraction System Operations Summary

Cumulative Fuel Removed by Vapor Extraction - Past Six Months



Proposed Remediation Wells



Sentry Event Update

- 20 wells sampled, including 4 Exposition wells.
- Groundwater elevations generally decreased since December 2006 in the uppermost aquifer beneath the site.
- No VOCs detected in Exposition wells.
- In the south-central area, VOC concentrations decreased or remained similar to those observed in the same wells in December 2006.
- In the southeastern area, free product was again not detected in GMW-36. MTBE concentrations similar to December 2006 results in other wells sampled in southeastern area.
- In western off-site area, 1,2-DCA and MTBE detected in one well (WCW-7) at concentrations below RBCA levels.