

Norwalk Tank Farm Update

*Presented to the Norwalk Tank Farm
Restoration Advisory Board*

January 25, 2007

Presentation Overview

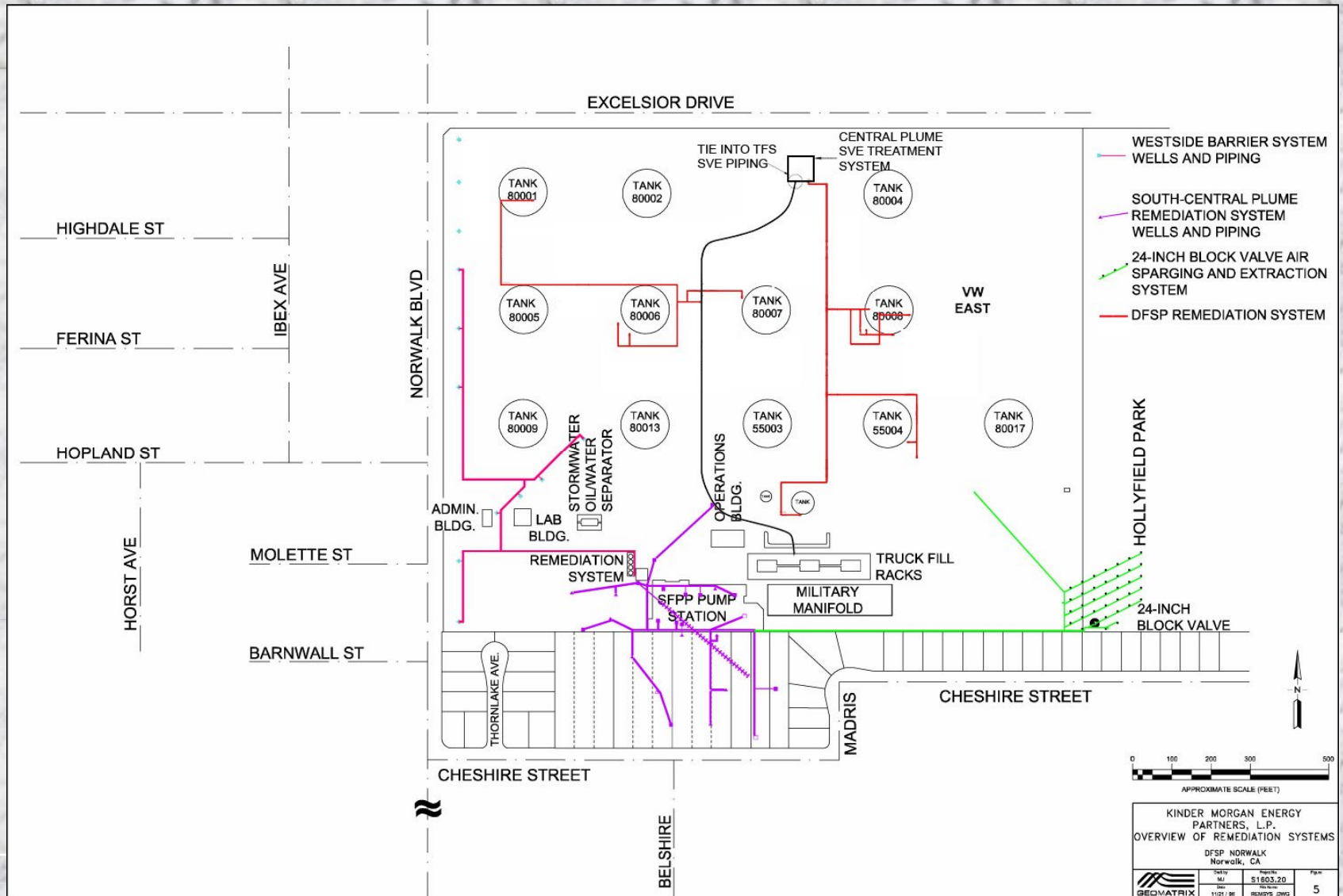
Topics to be Covered

- Second Addendum to RAP Update
- Remediation Operations Update

Second Addendum to RAP Update

- The Second Addendum to RAP incorporated comments received from the RWQCB and RAB.
- The Second Addendum to RAP was submitted to the RWQCB in November 2006 and is pending approval.
- Total fluids pumps have been ordered and received.
- Soil vapor extraction conveyance piping have been inspected and repaired.

Map of Current Remediation Systems



Soil Vapor Extraction System

- 17 onsite and 5 off-site vapor extraction wells in the South-Central Plume area.
- 2 vapor extraction wells in the Southeastern 24-Inch Block Valve area.

Soil Vapor Extraction System Operations Summary

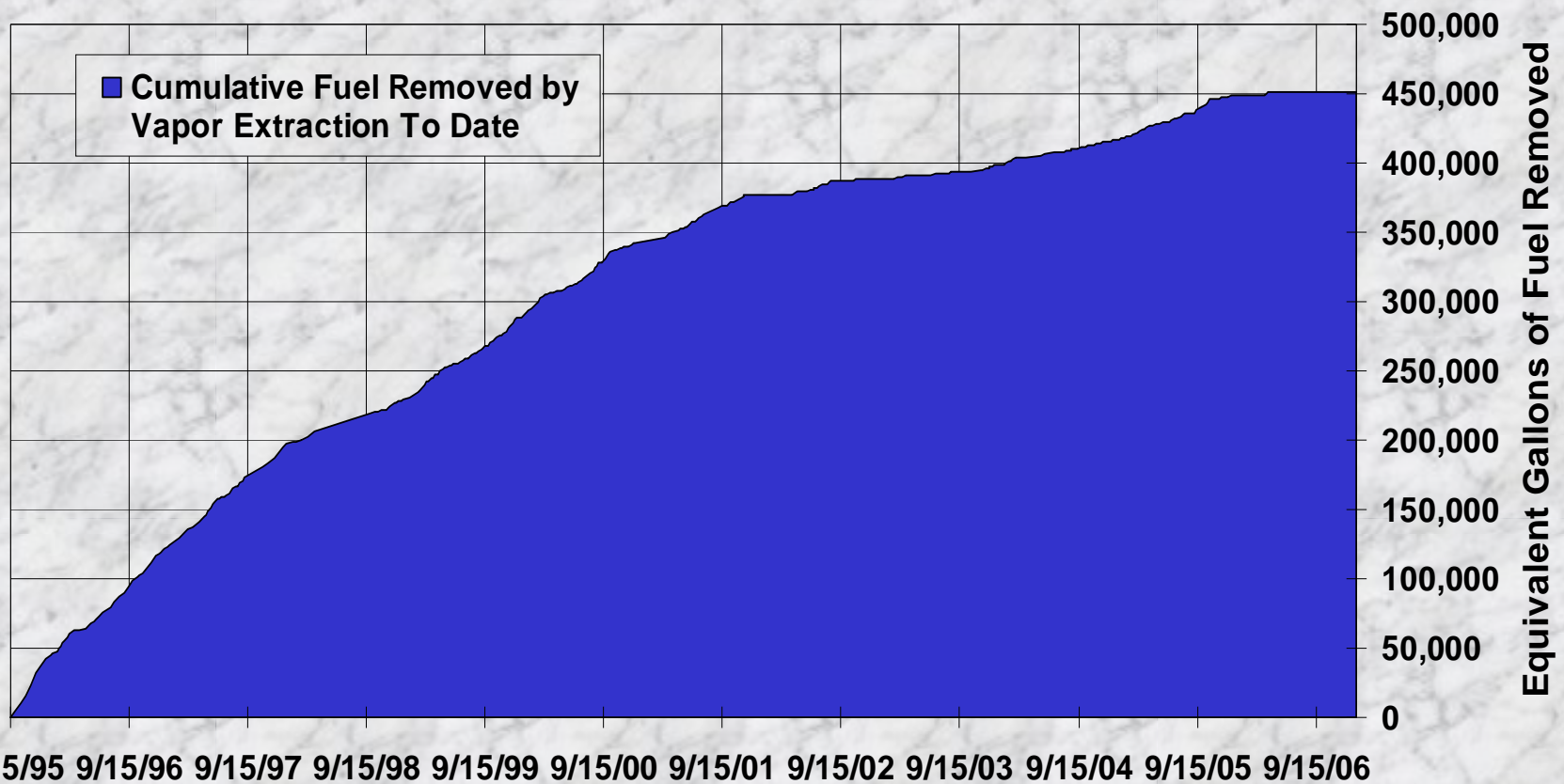
- Approximately 191 gallons equivalent of fuel removed from soil and destroyed by thermal oxidation since the October 2006 RAB meeting.
- Approximately 451,300 gallons equivalent of fuel removed from soil and destroyed by thermal oxidation since September 1995.
- Approximately 53,402 hours of operation since September 1995.

Soil Vapor Extraction System Operations Summary

- The SVE system operated continuously during fourth quarter 2006 with the following exceptions:
 - repair of knockout transfer pump (2 weeks)
 - installation of service disconnect (1 week)
 - groundwater monitoring (1 week)
- Percent operation: 66%

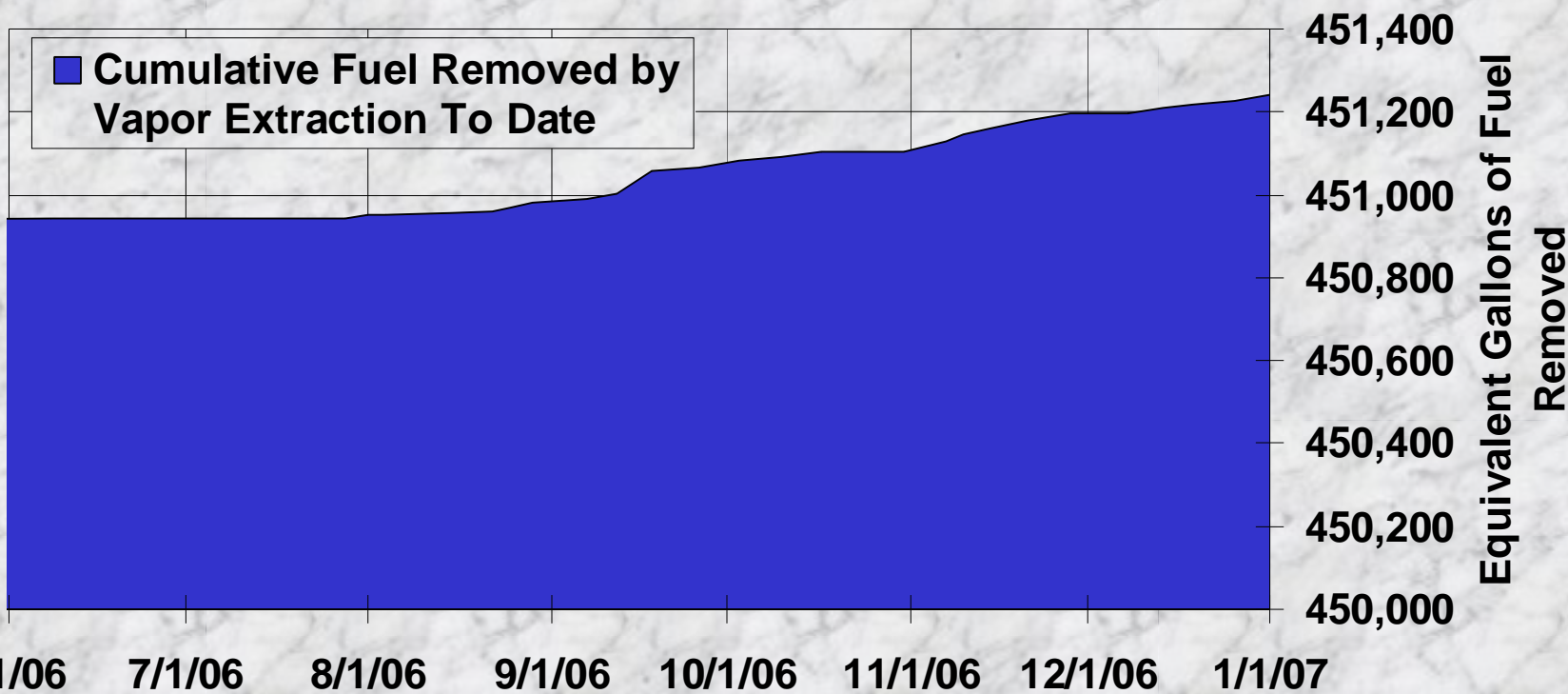
Soil Vapor Extraction System Operations Summary

Cumulative Fuel Removed by Vapor Extraction To Date



Soil Vapor Extraction System Operations Summary

Cumulative Fuel Removed by Vapor Extraction - Past Six Months



Groundwater/Product Extraction System

- 8 groundwater extraction wells in the West Side Barrier area
- 6 total fluids (product and groundwater) extraction wells and 2 groundwater extraction wells in the South-Central Plume area
- 2 total fluids (product and groundwater) extraction wells and 1 groundwater extraction well in the Southeastern 24-Inch Block Valve area

Groundwater/Product Extraction System Operations Summary

- Total groundwater extracted since October 2006 RAB meeting:
 - South-Central Plume area: 394,900 gallons
 - Southeastern 24-Inch Valve area: 164,000 gallons
 - West Side Barrier area: 1,958,700 gallons
 - Manual product recovery: 22 gallons
- Total groundwater extracted since September 1995:
 - South-Central Plume area: 24.1 million gallons
 - Southeastern 24-Inch Valve area: 7.5 million gallons
 - West Side Barrier area: 24.9 million gallons
 - Total groundwater extracted: 56.5 million gallons
 - 8,833 gallons free product removed

Groundwater/Product Extraction System Operations Summary

- The groundwater/product extraction system operated continuously during fourth quarter 2006 with the following exceptions:
 - groundwater monitoring (1 week)
 - pump maintenance (<1 week)
 - air compressor service (<1 week)
- Percent operation: 79%

Groundwater/Product Extraction System Operations Summary

Producted Extracted and Water Treated Summary

