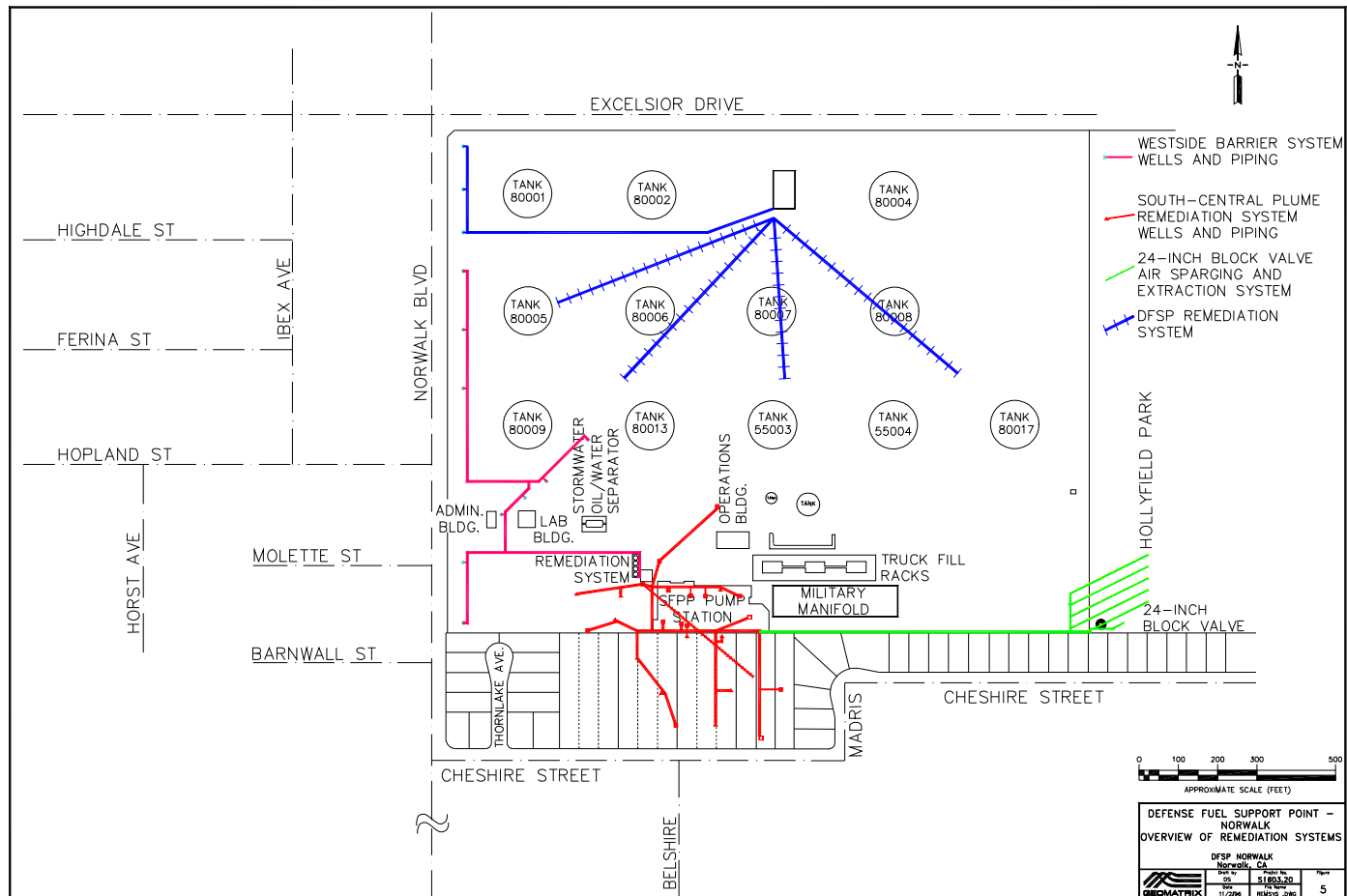


# ***Norwalk Tank Farm Update***

*Kinder Morgan Energy Partners  
Norwalk Tank Farm  
Restoration Advisory Board Meeting*

*April 26, 2001*

# Map of Current Remediation Systems



# Soil Vapor Extraction System

- 16 onsite and 7 offsite vapor extraction wells in the South-Central Plume area.
- 2 vapor extraction wells in the 24-inch Valve area.

# Soil Vapor Extraction System Operation Summary

- 7,782 gallons equivalent of fuel removed from soil and destroyed by thermal oxidation since January 2001 RAB meeting.
- 350,250 gallons equivalent of fuel removed from soil and destroyed by thermal oxidation since September 1995.

# Groundwater and Free Product Removal

- 8 groundwater wells in West-Side Barrier area.
- 5 groundwater/product wells in South-Central Plume area.
- 2 groundwater/product wells in 24-inch Valve area.

# **South Central/24-inch Valve Groundwater/Product Extraction System Operations Summary**

- 101,980 gallons water pumped from South-Central Plume area since January 2001 RAB meeting.
- 178,239 gallons water pumped from 24-inch Valve area since January 2001 RAB meeting.
- 19.3 million gallons from South-Central/24-inch Valve areas and 4.8 million gallons from West-Side Barrier for a total of 24.1 million gallons removed since September 1995.
- No free product removed since January 2001 RAB meeting (typical for Spring season).
- 8,735 gallons free product removed since September 1995.

# February 2001 Sentry Well Monitoring Event

- 14 sentry wells, 5 Exposition wells, plus resampled wells WCW-08 and WCW-13.
- Sentry event provides seasonal data and early warning of significant changes.
- Chemical concentrations in sentry wells similar to previous sampling events.
- No chemicals detected in Exposition wells.
- No chemicals detected in WCW-13.
- TPHFP was detected in WCW-08 as in previous sampling events. However, BTEX, 1,2-DCA and MTBE were not detected in WCW-08.