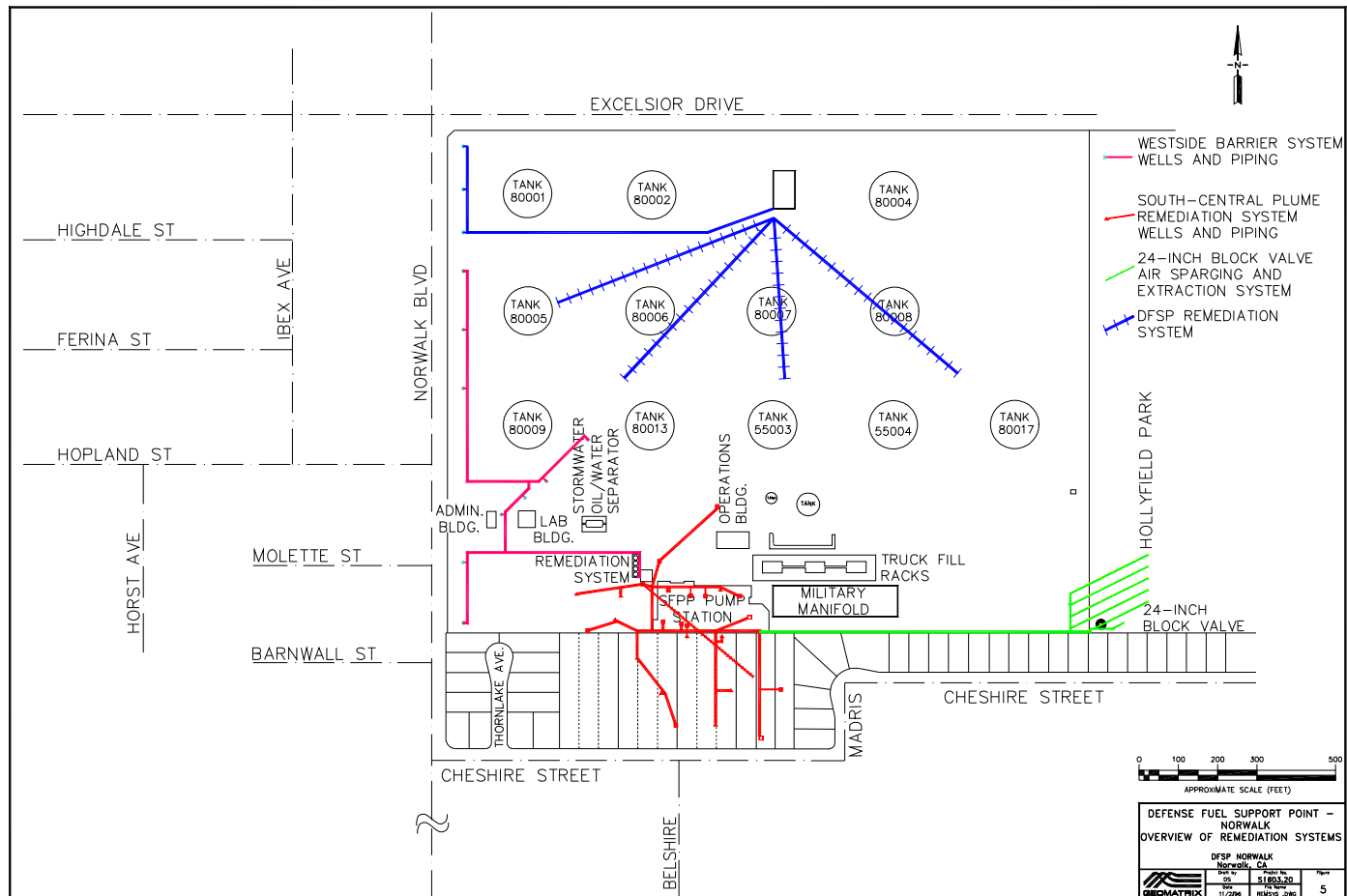


Norwalk Tank Farm Update

*Kinder Morgan Energy Partners, L.P.
Norwalk Tank Farm
Restoration Advisory Board Meeting*

January 25, 2001

Map of Current Remediation Systems



Groundwater/Free Product Removal

- 8 groundwater wells in West-Side Barrier area
- 5 groundwater/product wells in South-Central Plume area
- 2 groundwater/product wells in 24-inch Valve area

South Central/24-inch Valve Groundwater/Product Extraction System Operations Summary

- 295,000 gallons water pumped from South-Central Plume area since October RAB Meeting
- 285,000 gallons water pumped from 24-inch Valve area since October RAB meeting
- 450,000 gallons water pumped from West-Side Barrier area since October RAB meeting
- 19.0 million from South-Central/24-inch Valve areas and 4.8 million from West-Side Barrier for a total of 23.8 million gallons removed since September 1995
- No free product removed since October 2000 RAB meeting (typical for winter season)
- 8,735 gallons free product removed since September 1995

Soil Vapor Extraction/ Air Sparging

- 16 on-site/7 off-site vapor extraction wells in South-Central Plume area
- 2 vapor extraction wells in 24-inch Valve area
- Air sparge trenches in 24-inch Valve area (not in operation)

Soil Vapor Extraction System Operations Summary

- 5,195 gallons equivalent of fuel removed from soil and destroyed by thermal oxidation since October 2000 RAB meeting
- 342,500 gallons equivalent of fuel removed from soil and destroyed by thermal oxidation since September 1995

Miscellaneous Items

- Trees in hibernation; will prune and install sticky tape around trunks to trap bugs
- Installed new air stripper blower and 2 new air stripper trays to treat MTBE in groundwater to meet new NPDES requirements
- Second well in 24-inch Valve on line October 24; recent data indicate larger capture zone
- Well boxes complete on Chang property; wells to go on line in next few weeks